

TARGA[®] HOLLOW FIBER CARTRIDGES

8-inch Industrial Water Ultrafiltration Cartridges

PRODUCT DESCRIPTION

| | |
|---------------------------|--|
| Membrane Chemistry: | Proprietary semi-permeable polysulfone |
| Membrane Type: | PMC |
| Housing Shell/End Caps: | Proprietary polysulfone |
| Fiber Support Netting: | Polypropylene/Polyethylene |
| Permeate Collection Tube: | PVC |
| Potting Material: | Proprietary epoxy compound |
| Regulatory Status: | UL Listed to ANSI/NSF Standard 61 |
| Storage Solution: | Glycerin |

PRODUCT SPECIFICATIONS

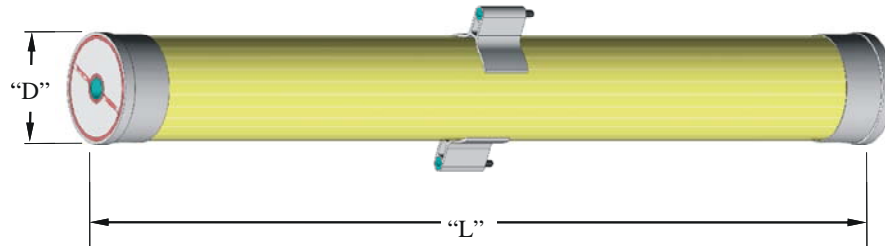
| Model | Part Number | Nominal MWCO | Production Range gpm (m ³ /hr) |
|------------------------------------|-------------|--------------|---|
| TARGA [®] 8048-346-35-PMC | 0720420 | 100,000 | 20.4 (4.6) - 9.6 (2.2) |
| TARGA [®] 8072-544-35-PMC | 0720421 | 100,000 | 32.1 (7.3) - 15.1 (3.4) |

OPERATING & DESIGN INFORMATION

| | |
|--|--|
| Maximum Pressure (water): | 45 psi (3.0 bar) @ 104° F (40° C) or less |
| Temperature Range: | 32° F (0° C) - 104° F (40° C) |
| Maximum Production Transmembrane Pressure: | 30 psi (2.1 bar) |
| Maximum Backflush Transmembrane Pressure: | 20 psi (1.4 bar) |
| Maximum Total Chlorine @ 77° F (25° C) or lower: | 200 ppm @ 9.5 pH or higher during intermittent backflush |
| Maximum Total Chlorine Contact: | 200,000 ppm-hrs cumulative |

NOMINAL DIMENSIONS

| Model | Fiber Diameter (ID) | Membrane Area | D Inches (mm) | L Inches (mm) |
|------------------------------------|---------------------|--|------------------|------------------|
| TARGA [®] 8048-346-35-PMC | 0.035 inch (0.9 mm) | 346 ft ² (32.1 m ²) | 8.4 (213) | 48 (1219) |
| TARGA [®] 8072-544-35-PMC | 0.035 inch (0.9 mm) | 544 ft ² (50.5 m ²) | 8.4 (213) | 72 (1829) |



TARGA® HOLLOW FIBER CARTRIDGE

CARTRIDGE STORAGE CONDITIONS:

New cartridges are impregnated with glycerin. Glycerin should be removed from new cartridges before initial use with a rinse followed by a caustic wash and then a caustic/chlorine wash. See pre-startup cleaning instruction sheet packed with each cartridge shipment.

New cartridges should be stored in their original shipping containers and crates until ready for installation, as follows:

- Indoors, out of direct sunlight.
- At temperatures between 50 – 85 °F (10 – 30 °C).
- At relative humidity below 70%.
- In a horizontal position.

Used cartridges should be cleaned, rinsed and impregnated before storage with one of the following solutions.

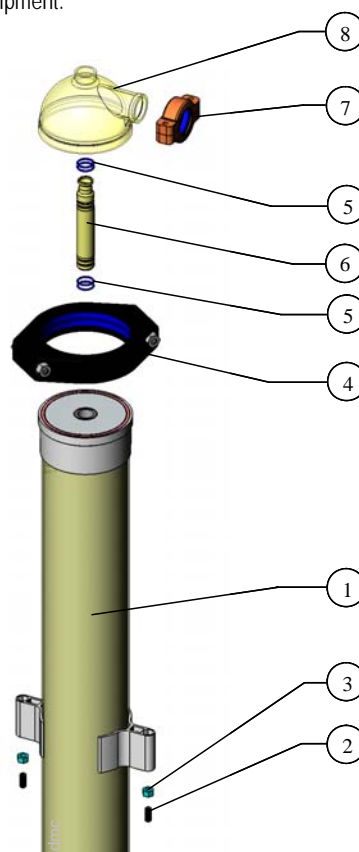
- Glycerin @ 80 – 100% (best)
- Phosphoric acid @ pH 2 – 3
- Benzoic acid or sodium benzoate @ 1,000 ppm
- Sodium bisulfite or sodium metabisulfite @ 1,000 – 5,000 ppm

Cartridges stored in sodium bisulfite or sodium metabisulfite should be flushed with clean water and impregnated with fresh solution at six-month intervals. Once impregnated the cartridges should be left on the system with all valves closed or removed from the system and sealed in plastic bags. Storage conditions described above for new cartridges should be used for storage of used cartridges. Cartridges must be drained, rinsed and cleaned after storage per the pre-startup cleaning instruction sheet packed with each cartridge shipment.

CARTRIDGE ASSEMBLY AND COMPONENTS:

| Item | Description | | KMS Part Number |
|------|-----------------------------------|--------|-------------------|
| 1 | 8" HF Cartridge | 1 each | See first page |
| 2 | Leveling Hardware (Screw ½" X 13) | 2 each | 1002443 |
| 3 | Leveling Hardware (Nut ½" X 13) | 2 each | 1002443 |
| 4 | 8" Coupling Set (gasket included) | 2 each | 0151303 |
| 5 | O-Ring, Permeate Adapter | 8 each | 0211022 |
| 6 | Permeate Adapter | 2 each | 1002655 |
| 7 | 2" Coupling Set (gasket included) | 2 sets | 0151304 / 0151261 |
| 8 | End Cap | 2 each | 0040213 |

Kit Process Pass for 8" cartridge – KMS Part Number: 0220158.



The information contained in this publication is believed to be accurate and reliable, but is not to be construed as implying any warranty or guarantee of performance. We assume no responsibility, obligation or liability for results obtained or damages incurred through the application of the information contained herein. Refer to Standard Terms and Conditions of Sale and Performance Warranty documentation for additional information.

Koch Membrane Systems, Inc., www.kochmembrane.com

Corporate Headquarters: 850 Main Street, Wilmington, Massachusetts 01887-3388, US, Tel. Toll Free: 1-888-677-5624, Telephone: 1-978-694-7000, Fax: 1-978-657-5208
 European Headquarters: Koch Chemical Technology Group Ltd., Units 3-6, Frank Foley Way, Stafford ST16 2ST, GB, Telephone: +44-178-527-2500, Fax: +44-178-522-3149

• San Diego US • Aachen DE • Lyon FR • Madrid ES • Milan IT • Wijnegem BE • Beijing & Shanghai CN • Mumbai & Chennai IN • Melbourne & Sydney AU • Singapore • Sao Paulo BR • Manama BH •

The FLOW LINES DESIGN and TARGA are registered trademarks of Koch Membrane Systems, Inc. in the US and other countries.

The STYLIZED K is a registered trademark of Koch Industries, Inc. in the US and other countries.

Koch Membrane Systems, Inc. is a Koch Chemical Technology Group, LLC company.

© 2010 Koch Membrane Systems, Inc. All rights reserved worldwide. 06/10